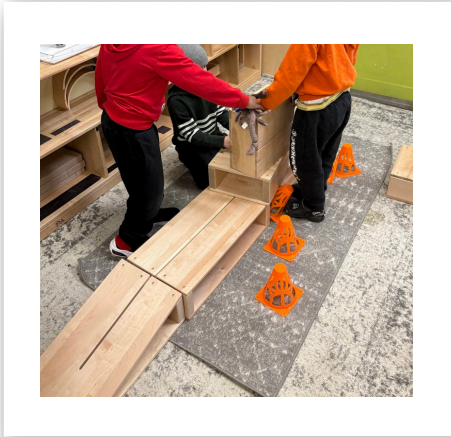


Family Explore: COMMUNITY

Exploring the learning community with children

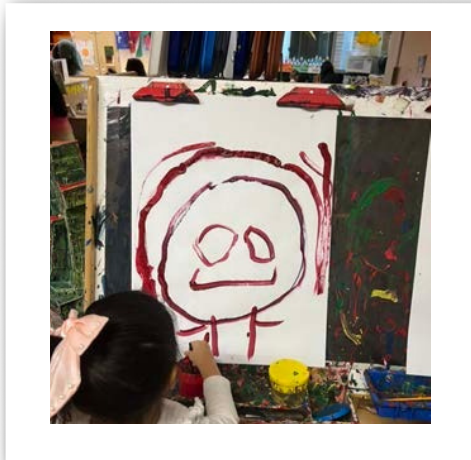
Where did you EXPLORE today?



Blocks



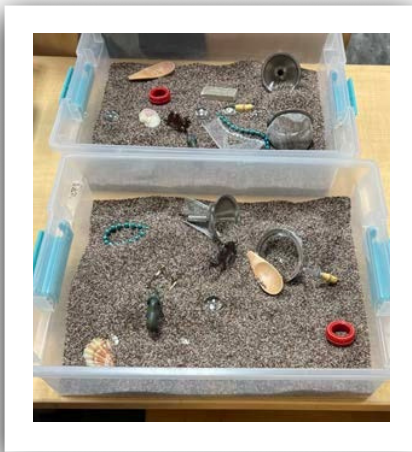
Play Dough



Painting



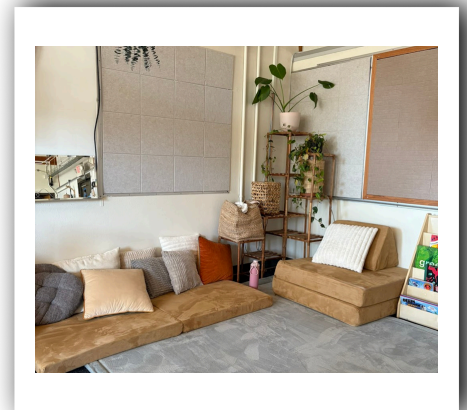
Light Table



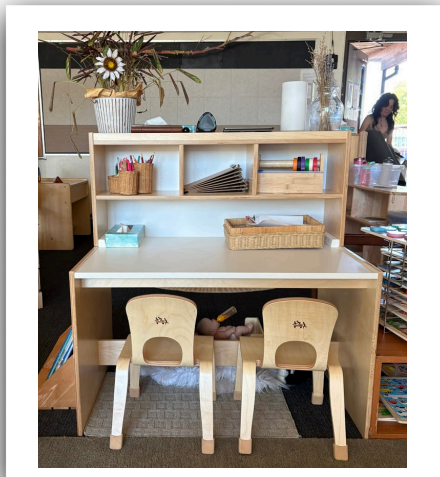
Sand



Water Table



Cozy Corner & Books



Message Center

What did you DISCOVER?

Helping Children Connect to a New Community

At the start of a new school or new program year there are new people to meet, new materials to explore, new experiences, new routines and expectations, and new foods at meal times.

You can support your child's transition to school by talking about connections between home and school routines.

- *What was it like to have lunch at school? That sounds just like home! (Or, that's sounds really different from what you are used to.)*
- *What happened when you played with other kids today? Was it like playing with your brother/sister/cousins? What kinds of things did you do together?*

Talking with children about **Connections** between one thing and another helps them think about similarities and differences. This type of thinking is related to success in school.

Teachers regularly ask children to make connections between what they learned previously and new concepts.



Where could you explore tomorrow?



Tinkering



Bikes